

Flo Table – FLTR42/48-U

Product Documentation



This document includes:

01

End of life and Recovery options

Disassembly Instructions

FLTR42/48-U

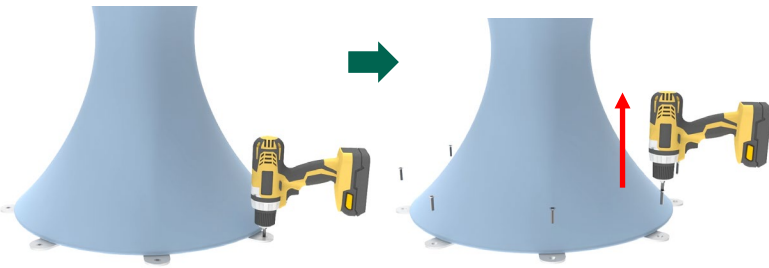
Time Required: Approximately 15 minutes

These instructions may be used to disassemble all Flo dining tables.



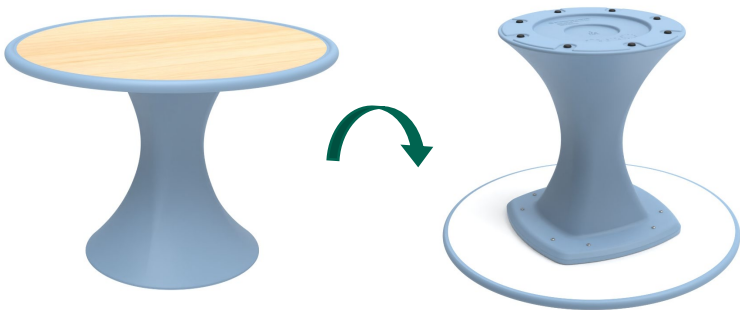
Step 1

If the table is bolted to floor, remove all 8 floor mounting screws. If not proceed to step 2.



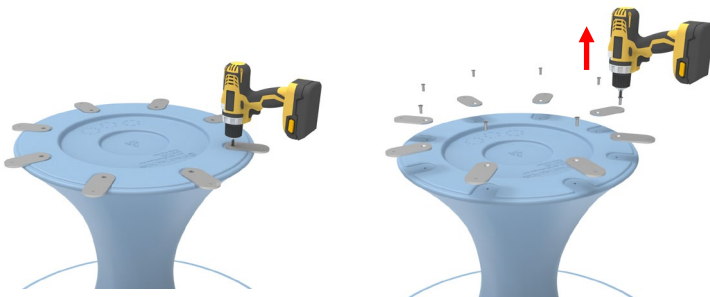
Step 2

Flip the table flat onto its top.



Step 3

If the table was bolted to floor, remove all 8 screws and metal bolt to floor brackets. If not proceed to step 4



Tools Required

Power Drill

Locking Pliers

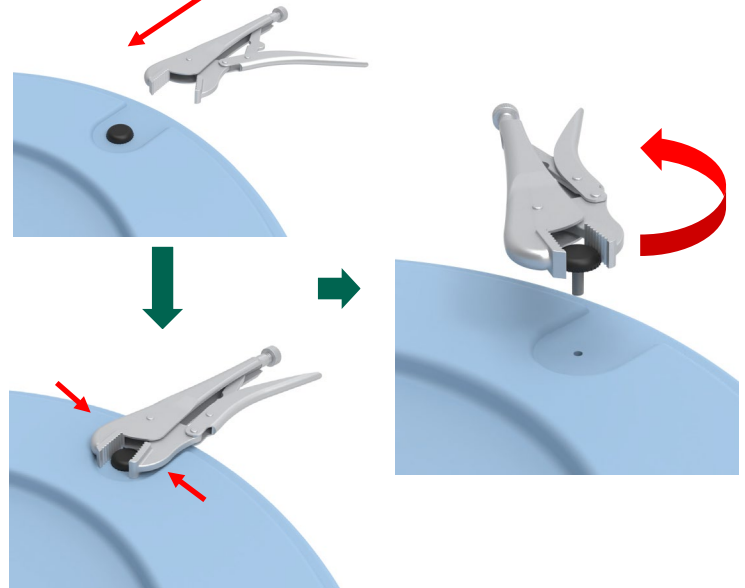


Phillips, Hex Pin-in, & Torx Pin-in Bits



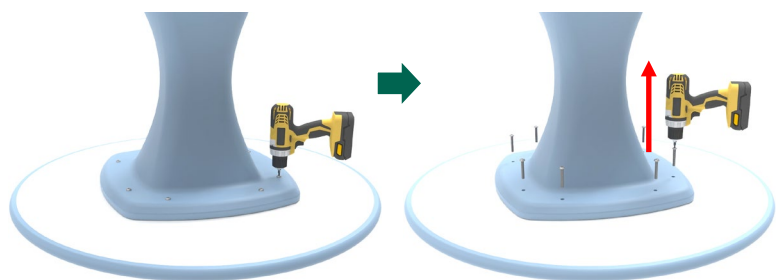
Step 4

If optional with glides use a set of locking pliers to remove them. Clamp around the edge of the glide and turn the tool left until the glide is removed.



Step 5

Remove all 8 table top mounting screws.

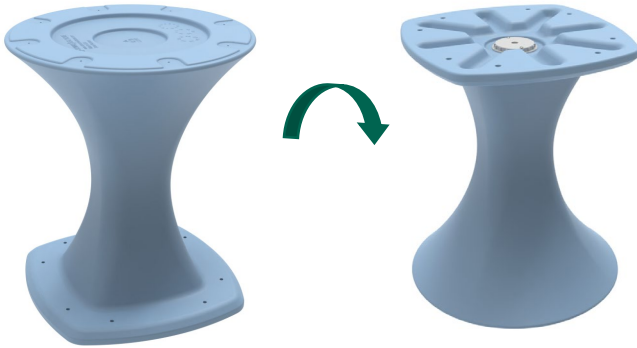


Disassembly Instructions

FLTR42/48-U

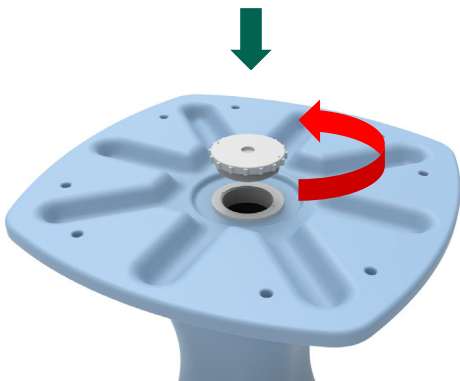
Step 6

Flip the table base over.



Step 7

Remove the ballast cap.



Step 8

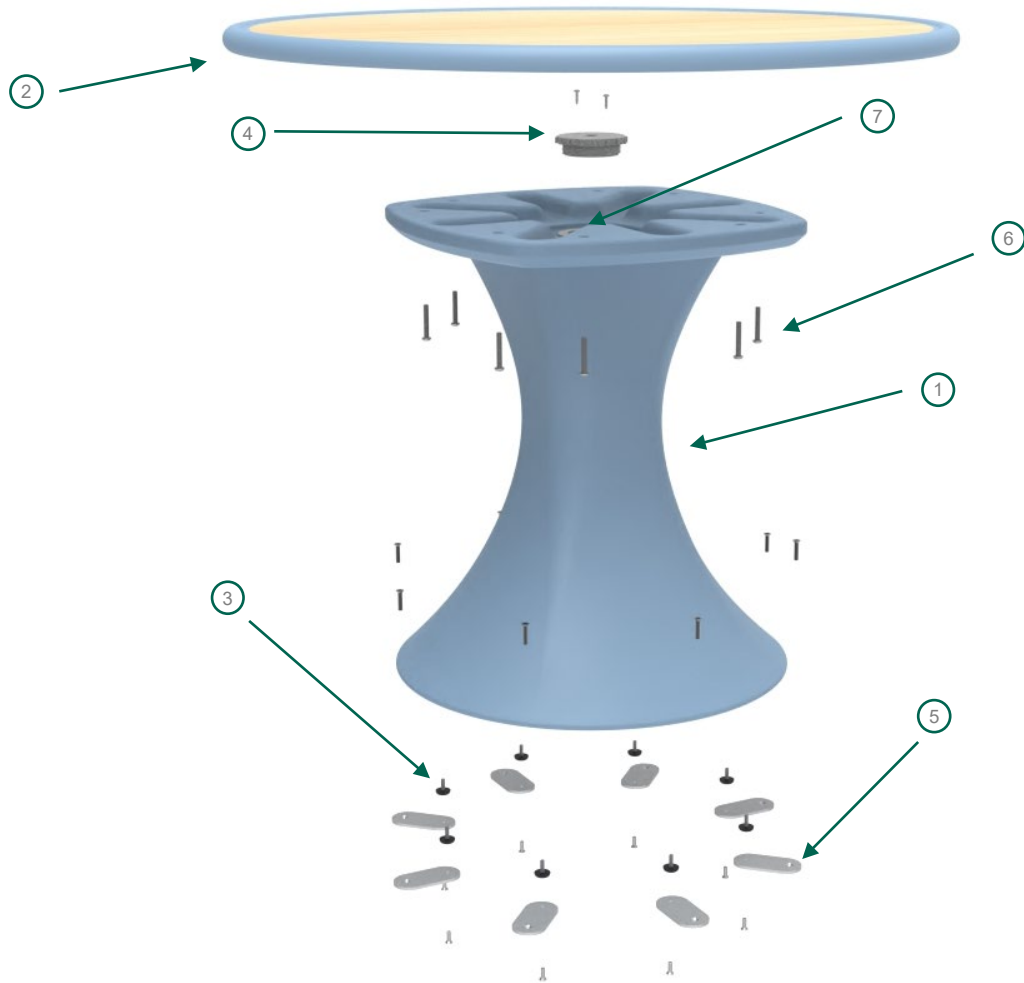
To empty bases with ballast sand, cut an opening in the bag located inside the base. Flip the table over and allow the play sand to fall into a receptacle.





This may require two people due to the weight of the base. Please use caution

Material Breakdown

FLTR42/48-U



Number	Quantity	Component	Material
1	1	Table Base	Low Density Polyethylene
2	1	Table top	Laminate / Polyurethane
3	8	Glides	Nylon / Steel
4	1	Ballast Cap	Nylon
5	8	Bolt to Floor Brackets (optional)	Steel 
6	Various	Various Fasteners	Steel 
7	100lbs	Ballasting Weight (optional)	Play Sand

End of Life Recovery Options

FLTR42/48-U

Identification of Materials		Material Recovery Opportunities		
Material	Example Components	Recycling Note	Higher Value Opportunity	Lower Value Opportunity
Please visit www.recyclingmarkets.net to find a recycling outlet nearest to you				
Plastic				
Nylon (PA)	Glide	Actively recycled into raw polymer by industrial plastic recyclers. It is important to note, however, that recycled plastic markets are highly variable and acceptance of a given material fluctuates based upon multiple factors (e.g. material type, quantity, presence of contaminants, markets for that material, etc). Recycling value is improved with greater quantities and accurate material identification (i.e. identified by base polymer, filler, and additive content)	Recycled PA Regrind	Mixed Thermoplastic Compression Molding
Polyurethane (PU)	Table Top Edge		General Recycling, where accepted	
Low Density Polyethylene (LDPE)	Table Base		Recycled LDPE Regrind	
Metals - Ferrous (e.g. Steel, Iron)				
Steel	Fasteners, Bolt to Floor plates	Actively recycled into raw ferrous metal ingot. Ferrous metals are easily separable from other materials through shredding and magnetic separation. Therefore, many metal recyclers will accept ferrous metals which contain small amounts of mixed materials (e.g. plastic, aluminum).	Recycled Steel Ingot	Off Grade Ferrous Ingot
Wood / Biobased Materials				
Hard board	Table Top	Reuse is currently the best options for this material. As a low value option, the energy content can be reclaimed in a designated waste-to-energy facility equipped with proper pollution control technologies.	Not Actively Recycled (Currently)	Waste to Energy
Particle board	Table Top			
Laminate	Table Top			